

# Advanced Fetal Doppler Assessment

The decision to work with Philips is something we take very seriously. Our goal is to provide the education you need to make the most out of your investment.

## Course Description

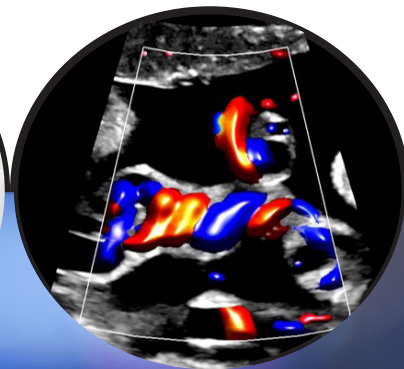
The Advanced Fetal Doppler Assessment University is a one-day, physician-led course that will provide the learner with information on the clinical applications and techniques of fetal Doppler evaluation and interpretation. Educational material will be presented in the form of lectures, case presentations and live scanning sessions. Dr. Luis Goncalves is an accomplished physician who has focused his attention on maternal and fetal well-being. He uses ultrasound extensively to thoroughly evaluate fetal physiology and anatomic structures. Dr. Goncalves has published numerous articles regarding fetal Doppler assessment.

## Course Objectives

Upon successful completion of the program, attendees will be able to:

- Explain the basic knowledge of Doppler fundamentals
- Define maternal vascular flow and how it relates to the fetus
- Apply knowledge of the fetal circulation process
- Discuss the evaluation and interpretation of various maternal/fetal Doppler assessments:

1. Umbilical arteries
2. Middle Cerebral Artery (MCA)
3. Ductus Venosus
4. Aortic Isthmus
5. Fetal Heart



In today's competitive and dynamic healthcare climate, it is critical to use your medical imaging systems to their fullest potential. Our goal at Philips Healthcare is to provide the clinical education you need to make the most of your equipment investment.



## Prerequisite

A thorough knowledge and understanding of 2D Obstetrical Ultrasound and Doppler imaging fundamentals are required for this program.

## Clinical Learning Journeys

Relevant learning. Flexible experiences. Measureable outcomes.



## Facilitators and Speakers



### Luis Goncalves, MD

"In obstetrics, Doppler technology provides insights into the status of the maternal and fetal circulations, helping to identify pregnancies at risk for preclampsia and placental insufficiency, fetal brain sparing and fetal cardiac decompensation. Middle cerebral artery Doppler is a clinically proven tool to assess and manage fetuses at risk for anemia. A solid understanding of basic Doppler principles and adherence to good scanning technique are fundamental to correctly interpret and apply this tool in a clinical practice."

## For more information

Contact Philips Ultrasound Clinical Education at 800.522.7022 and visit our education catalog at [www.learningconnection.philips.com/ultrasound](http://www.learningconnection.philips.com/ultrasound)

Please Visit [www.learningconnection.philips.com/en/ultrasound-education](http://www.learningconnection.philips.com/en/ultrasound-education)