



Dialysis Access Ultrasound: Planning, Placement and Maintenance

The complex duplex ultrasound assessments associated with hemodialysis access planning, placement, and maintenance require completeness and accuracy to ensure patients receive the most appropriate interventions and are essential in guiding the surgeon/interventionalists decision making process. This course is intended to help prepare the sonographer to perform these exams more confidently.

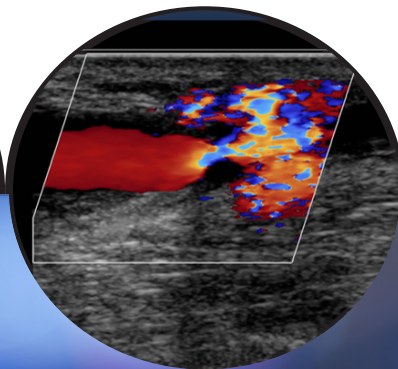
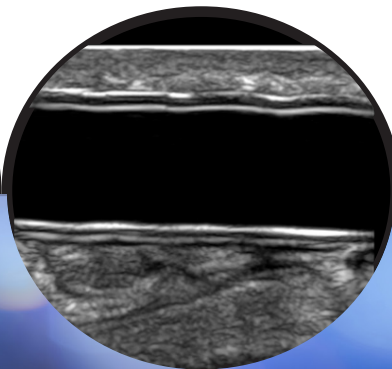
Course Description

This course will provide attendees the opportunity to spend a day with Melissa Warren, MHSc, RVT, RVS, RPhS, a dedicated vascular technologist with over 10 years of experience performing duplex ultrasound (DUS) for the dialysis population. The lecture provides a blend of didactic, case review and hands-on training that will enable attendees to develop an in-depth understanding and technical competency in pre-operative vessel mapping, post-operative evaluation and long-term surveillance of dialysis access conduits. Attendees will also be provided detailed information on the historical development of dialysis access, vascular anatomy, physiology and hemodynamics related to an access, comprehensive imaging protocols for pre-operative mapping and post-operative assessment of an access, and DUS interpretation criteria used to help promote long-term patency of these lifelines. At the end of this course, attendees will have the ability to utilize information learned to enhance daily technical practice and help facilitate clinical and surgical decision making.

Course Objectives

Upon successful completion of the program, attendees will be able to:

- Describe the history of hemodialysis for the treatment of renal failure
- Identify the various types of hemodialysis access
- Explain the vasculature associated with placement of hemodialysis access conduits
- Demonstrate ability to recognize sonographic anatomy and hemodynamics necessary to complete pre-procedure vessel mapping
- Describe the normal appearance of dialysis fistulae and grafts on duplex ultrasound images using B-mode, color Doppler and Doppler velocity waveform analysis
- Recognize abnormal duplex findings and common complications associated with dialysis fistulae and grafts
- Utilize protocols and criteria for pre-op vessel mapping and post-op evaluation of dialysis fistulae and grafts



In today's competitive and dynamic healthcare climate, it is critical to use your medical imaging systems to their fullest potential. Our goal at Philips Healthcare is to provide the clinical education you need to make the most of your equipment investment.



Prerequisite

This course is intended for medical professionals who want to acquire the technical and cognitive skills required to perform an array of vascular examinations needed for patients requiring dialysis. The attendee should have a functional understanding of vascular anatomy, physiology, and hemodynamics associated with normal peripheral vessels. An entry-level ability to recognize and evaluate peripheral vessels utilizing DUS is recommended, but not required.

Clinical Learning Journeys

Relevant learning. Flexible experiences. Measureable outcomes.



Facilitators and Speakers



Melissa Warren, MHSc, RVT, RVS, RPhS

Melissa Warren is a vascular technologist at Emory St. Joseph's Hospital and Grady Memorial Hospital in Atlanta, GA. She holds a Masters Degree in Health Science and three credentials in vascular ultrasound. Melissa serves on the board of trustees for Cardiovascular

Credentialing International and is an active member and contributor to many professional organizations, including the Society for Vascular Ultrasound, the American Society of Echocardiography and the American Society of Diagnostic and Interventional Nephrology. Her experience in an array of clinical settings is a testament to her passion for education and desire to share her knowledge and experience with the medical community to improve the quality of care and outcomes for patients.

For more information

Contact Philips Ultrasound Clinical Education at 800.522.7022 and visit our education catalog at www.learningconnection.philips.com/ultrasound

Please Visit www.learningconnection.philips.com/en/ultrasound-education