

Advanced System Training Cardiac 2D EPIQ

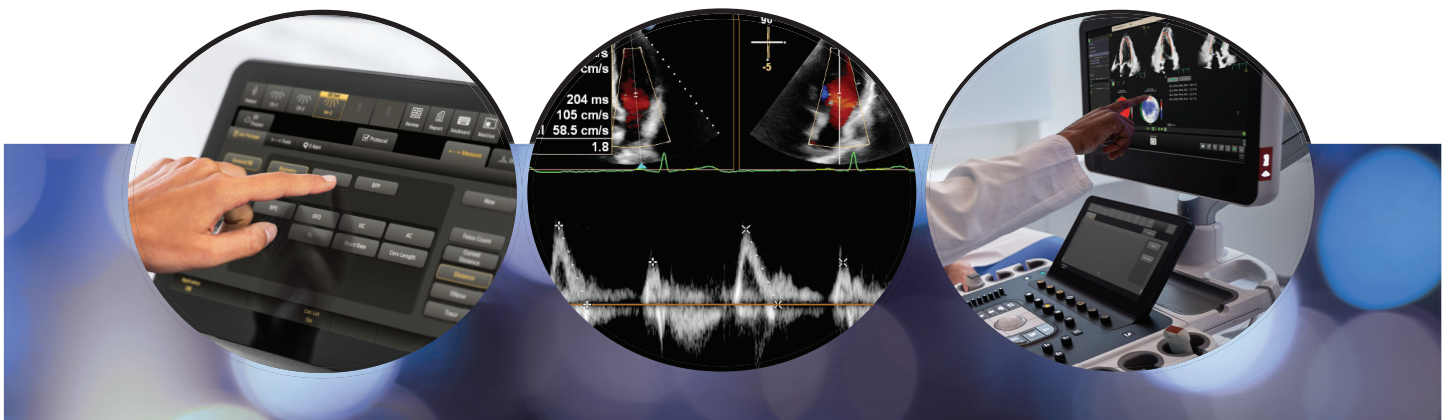
Advanced System Training (AST)

Courses educate customers on cutting-edge technologies specific to each system and application. Following onsite installation, the intensive AST program deepens your knowledge. With EPIQ's nSight Plus imaging and AI, AST courses show you how to apply the technology and enhance your workflow with real-life examples. On the EPIQ ultrasound system, additional imaging modes for LV assessment, and Auto Strain tools to include LV, RV and LA strain.

Course Objectives

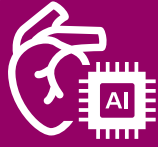
Upon completion of this program, attendees should be able to:

- Explain ZeroClick Technology and how it can improve workflow
- Discuss Auto Strain tools and additional information about strain, strain rate, and more
- Explain additional imaging techniques to assess LV function on technically difficult images



Make the most of your investment with education

Reduce unnecessary variability and gain greater alignment through AI and automation, benefit from standardized results as you move across procedures, and simplify everyday echo exams with more efficient procedures and fewer manual steps.



Transcend unnecessary variability with AI-enabled consistency



Transcend clinical complexity with advanced innovation



Transcend tedious tasks with efficient automation

Prerequisite

Attendees should have completed their onsite installation training.

Faculty

Philips Ultrasound Clinical Education.

Locations

Will be held in Philips Training Centers in Bothell, WA; Cambridge, MA; Cleveland, OH; Nashville, TN and San Diego, CA.

For more information

Contact Philips Ultrasound Clinical Education at 800-522-7022 and visit our education catalog at www.learningconnection.philips.com/ultrasound



Please Visit www.learningconnection.philips.com/en/ultrasound-education