

Vascular advanced customer training (ACT)-iU22 and iE33

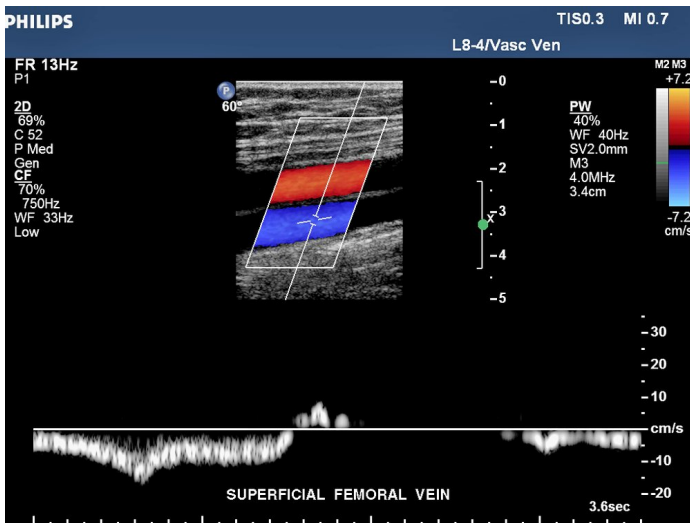
**Philips Ultrasound
Vascular 208**

This one-day course was developed specifically to meet the needs of sonographers who perform vascular ultrasound examinations using either the iU22 or iE33 ultrasound systems. B-Mode image and Doppler optimization will be discussed in depth, and there will also be a review of new iU22 or the iE33 system functionalities. A balanced approach of lectures and supervised hands-on workshops will allow attendees to practice on systems using models who have varying degrees of technical difficulty. This course may be helpful for those recently cross trained into vascular, or even for more experienced users who may benefit from the scanning advice offered by our Philips Clinical Education Staff.

Course At-a-Glance

Target audience	This education is intended for either practicing sonographers or physicians who already have a solid understanding of how to perform vascular examinations and but who want to learn how to use their systems and any new functionality this Vision level provides.
Prerequisites	Should be a practicing sonographer or a physician with prior duplex imaging experience.
Course faculty	Philips Clinical Education Specialists will deliver the hands on sessions.
Locations	Courses will be held at the various Philips training centers located in Atlanta, GA, Bothell, WA and Cleveland, OH.
For more information	Contact Philips Ultrasound Clinical Education at 1-800-522-7022 and visit our education portal at www.philips.com/ultrasoundclinicaleducation

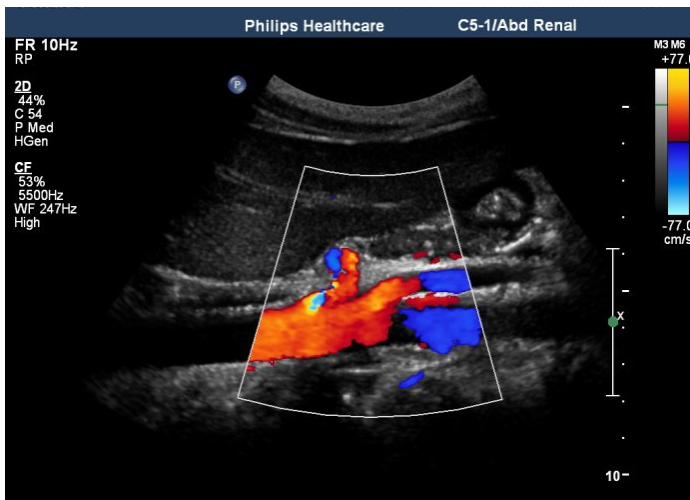
PHILIPS



Course objectives

Upon successful completion of this program, you should be comfortable discussing:

- Discuss B-Mode optimization for vascular examinations on either the IU22 or iE33 ultrasound systems.
- Explore how to optimize those imaging controls during the hands on sessions on models.
- Discuss common factors that affect flow states.
- Discuss the various Doppler modes and the controls that can be used to optimize them.
- Explore the Doppler modes and controls during hands on sessions on either the IU22 or iE33 systems.
- Discuss the measurements, ratios and indexes commonly used in vascular examinations.
- Discuss Volume Flow and explain its clinical uses.
- Explore how to determine a Flow Volume on a model.
- Discuss how SmartExam protocols may be used to reduce keystrokes and standardize the examination process.
- Discuss IMT.
- Explore how to acquire an image and perform an IMT measurement on it.
- Explain what Volume Plaque Quantification (VPQ) is.
- Describe how to acquire a volume on a model and evaluate it for quantification (this feature is currently only available on the Vision 2012 iU22).
- Discuss how patient images are reviewed.



www.philips.com/clinicaleducation



© 2013 Koninklijke Philips Electronics N.V.
All rights are reserved.

Philips Healthcare reserves the right to make changes in specifications and/or to discontinue any product at any time without notice or obligation and will not be liable for any consequences resulting from the use of this publication.

Philips Healthcare is part of Royal Philips Electronics

www.philips.com/healthcare
healthcare@philips.com

Printed in the USA
GSSNA-12-21140-04369 * JAN 2013