

# Advanced System Training - Live 3D EPIQ

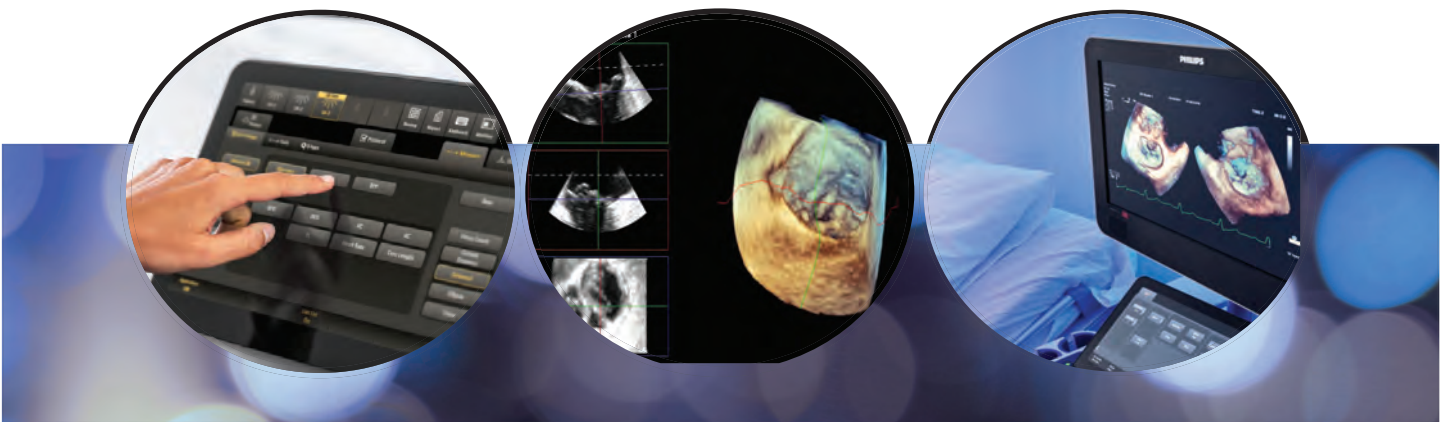
## Advanced System Training (AST)

Courses educate customers on cutting-edge technologies specific to each system and application. Following onsite installation, the intensive AST program will deepen your knowledge. This class is an introduction to xMatrix technology and functionality on the EPIQ system. Participants will learn 3D image acquisition and optimization on the EPIQ ultrasound system. Topics include Live 3D, 3D zoom, full volume and cropping.

## Course Objectives

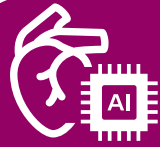
Upon completion of this program, attendees should be able to:

- Review 3D acquisition modes
- Review 3D image optimization
- Review cropping tools
- Review 3D color imaging



## Make the most of your investment with education

Reduce unnecessary variability and gain greater alignment through AI and automation, benefit from standardized results as you move across procedures, and simplify everyday echo exams with more efficient procedures and fewer manual steps.



Transcend unnecessary variability with AI-enabled consistency



Transcend clinical complexity with advanced innovation



Transcend tedious tasks with efficient automation

## Prerequisite

Attendees should have completed their onsite installation training.

## Faculty

Philips Ultrasound Clinical Education.

## Locations

Will be held in Philips Training Centers in Bothell, WA; Cambridge, MA; Cleveland, OH; Nashville, TN and San Diego, CA.

## For more information

Contact Philips Ultrasound Clinical Education at 800-522-7022 and visit our education catalog at [www.learningconnection.philips.com/ultrasound](http://www.learningconnection.philips.com/ultrasound)



Please Visit [www.learningconnection.philips.com/en/ultrasound-education](http://www.learningconnection.philips.com/en/ultrasound-education)