



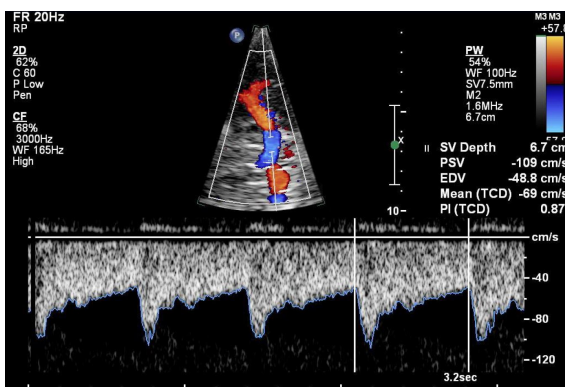
# Fundamentals of Transcranial Doppler Imaging

In today's competitive and dynamic healthcare climate, it is critical to use your medical imaging systems to their fullest potential. Our goal at Philips Healthcare is to provide the clinical education you need to make the most of your equipment investment.

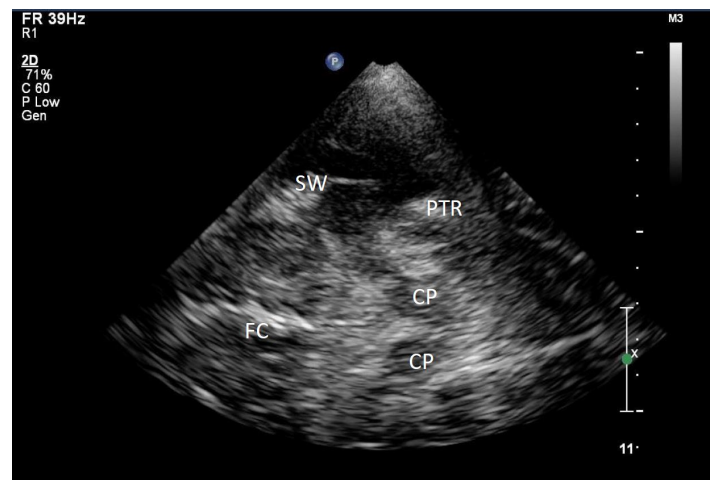
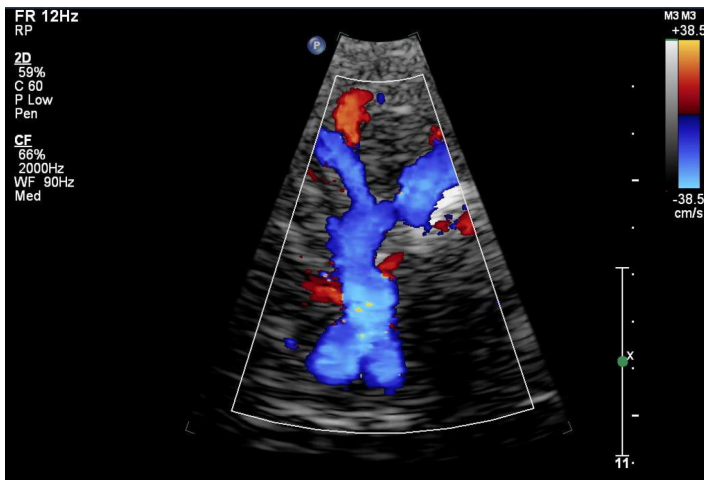
### Philips Ultrasound University Vascular 270

Transcranial Doppler Imaging (TCDI) is a non-invasive vascular duplex test used to evaluate the circle of Willis and the vertebrobasilar arteries using various acoustic windows. TCDI evaluates arterial flow distribution, intracerebral hemodynamics, and the presence of focal arterial lesions using B-mode, spectral and color Doppler imaging modalities.

This one-day program provides the basic skills needed for those with no prior experience to begin performing Transcranial Doppler Imaging (TCDI) exams. Those who take part in this course can expect to leave with a functional knowledge of examination techniques, general prerequisites, equipment, acoustic windows, vessel identification, normal Doppler imaging characteristics, diagnostic approach – depth and flow velocity criteria for a normal examination. Educational material will be presented in the form of detailed lectures as well as multiple supervised hands-on scanning sessions on our premium systems.



# Fundamentals of Transcranial Doppler Imaging (VASC270)



## Course objectives

Upon completion of this course, the learner should be able to:

- Explain and discuss the basic imaging principles of Transcranial Doppler Imaging
- Explain and discuss indications for TCDI
- Explain the normal intracerebral arterial branches and collateral pathways
- Describe typical depths and velocities for normal arteries.
- Describe acoustic windows, equipment and technique for a complete exam.
- Demonstrate ability to acquire images at each acoustic window
- Identify the elements of a complete basic Transcranial Doppler Imaging exam protocol
- Identify the limitations of TCDI

## Audience

This course is for physicians and sonographers interested in learning another exam type that will enable them to serve a wider population of patients with neurological disorders

## Prerequisite

This course is intended for beginners to TCDI. Practiced sonography skills highly recommended.

## Faculty

Philips clinical education specialists.

## Locations

Course may be held in Philips central locations in Alpharetta, Georgia; Bothell, Washington; and Cleveland, Ohio. Other locations may be offered.



### For more information

Contact a Philips ultrasound clinical services coordinator at 800-522-7022 and visit our education catalog at

[www.learningconnection.philips.com/ultrasound](http://www.learningconnection.philips.com/ultrasound)

