



# Advanced Perioperative 3D TEE - Mitral Valve

## Clinical Decision-Making in Structural Heart & Valve Disease

Philips Ultrasound  
University  
Cardiology 326

This course is designed to provide anesthesiologists, cardiologists, cardiac sonographers and cardiac surgeons with a comprehensive understanding of the role of 2D & 3D TEE in facilitating perioperative & periprocedural clinical decision-making.

This course will be taught by Stanton K. Shernan, MD, FAHA, FASE. Educational material will be presented in the form of lectures, case presentations, and informal discussions that together will provide a comprehensive review of how perioperative TEE can be used in patients undergoing valve repair and replacement to guide surgical decision-making preoperatively, and postoperatively in patients presenting with complications. In addition, the role of TEE in facilitating interventional guidance and clinical decision-making for patients undergoing Mitral Clip, Mitral Valve-in-Valve,

Perivalvular Leak Closure, and Mitral Valve surgical assessment.

This course will be taught at Philips locations in Alpharetta, Georgia; Bothell, Washington; and Cleveland, Ohio. Other locations may also be offered.

# PHILIPS

# Advanced Perioperative 3D TEE - Mitral (CV326)



Stanton K. Shernan, MD, FAHA, FASE

“Our goal is to use didactics, case discussions, and a hands-on experience to enable participants to acquire confidence and a comfort level so they can immediately incorporate Live 3D TEE into their clinical practice.”

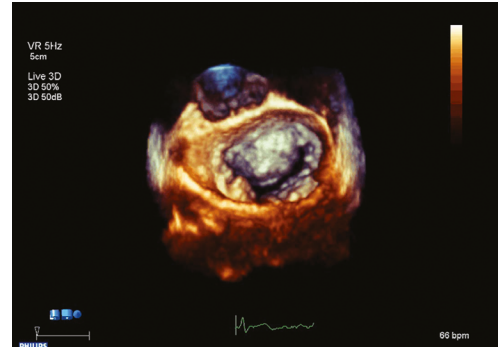
## Learning outcomes

Upon successful completion of this program, attendees should be able to:

- Discuss the utility of Live 3D TEE in the assessment of complex valvular anatomy
- Explain the use of Live 3D TEE to aid in surgical planning in complex valvular heart disease
- Discuss the utility of 3D TEE facilitating clinical decision-making and procedural guidance during interventions for structural heart disease
- Discuss the appearance of abnormal heart structures using Live 3D TEE
- Describe the controls most useful in a daily workflow using Live 3D TEE

## Facilitators and speakers

- Stanton K. Shernan, M.D., FAHA, FASE  
Professor of Anaesthesia at Harvard Medical School
- Philips Ultrasound Clinical Education



## Prerequisites

Attendees must have completed one of the lower sequence CV TEE courses in our catalog. This course requires skills from those courses.

This course does not provide system control training. We recommend the Advanced Customer Training Cardiovascular Live 3D course for system instrumentation regarding Live 3D.

## For more information

Contact Philips Ultrasound Clinical Education at **800-522-7022** and visit our education portal: **[www.learningconnection.philips.com/ultrasound](http://www.learningconnection.philips.com/ultrasound)**

## Remote Access Available

This course has remote access opportunities available. Please speak to your Clinical Specialist for more information.

Please visit [www.learningconnection.philips.com/ultrasound](http://www.learningconnection.philips.com/ultrasound)



© 2017 Koninklijke Philips Electronics N.V.  
All rights are reserved.  
Mar 2017

Philips Healthcare reserves the right to make changes in specifications and/or to discontinue any product at any time without notice or obligation and will not be liable for any consequences resulting from the use of this publication.

Philips Healthcare is part of Royal Philips Electronics

[www.philips.com/healthcare](http://www.philips.com/healthcare)  
[healthcare@philips.com](mailto:healthcare@philips.com)  
fax: +31 40 27 64 887

Philips Healthcare  
22100 Bothell Everett Highway  
Bothell, Washington 98021