

Sonographers role assessing patients pre - post Intervention

Philips Ultrasound Cardiology 307

As the variety of interventional procedures grow the need for imaging before and after these case increases. With that increase the sonographer is required to do more to assess the patients undergoing an interventional procedure.

Course description

The field of echocardiography is a rapidly changing one. Sonographers must keep up with the changes and technological advancements. Procedures such as transcatheter aortic valve replacement, mitral clip, left atrial appendage occluder devices, atrial septal defect device closure, and percutaneous closure of paravalvular leaks require in depth pre and post echocardiograms. This course will review a comprehensive process for imaging patients prior to and after being sent for interventional procedures. Educational material will be presented in the form of lectures and case presentations.

Course objectives

Upon completion of the program, attendees should be able to:

- Describe common percutaneous intervention procedures
- Explain the views and measurements needed prior to a procedure
- Understand the images and measurements that should be taken as follow up from interventional procedures.
- Improve the interpretation skills to differentiate different disease states
- Review case studies related to interventional procedures

PHILIPS

Sonographers role assessing patients pre - post Intervention (CV307)



"With all the new advancements in Structural heart disease it's essential that the sonographer understand the proper pre and post op assessment of valvular heart disease. This class will show the systematic approach to evaluate valvular heart disease, and show the variety of different echocardiographic methods for the proper evaluation."

RICHARD A. PALMA BS, ACS, RCS, RDCS, FSDMS, FASE

Pre-requisite knowledge

A thorough knowledge and understanding of basic echocardiography is recommended for this program.

This course is intended for sonographers.

Location

Courses will be held at the various Philips training centers and other locations across the United States.

Faculty

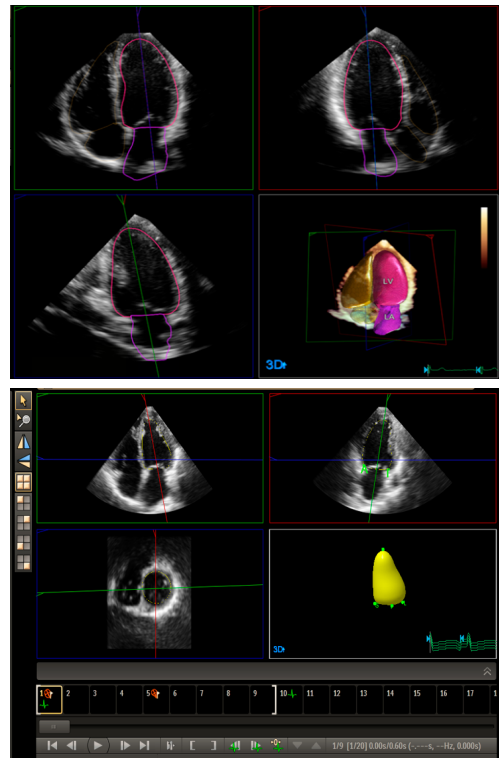
Richie Palma BS,ACS,RCS,RDCS,FSDMS,FASE Philips
Ultrasound Clinical Education

For More Information

Contact Philips Ultrasound Clinical
Education at **800-522-7022** and visit our education portal:
www.philips.com/ultrasoundclinicaleducation

Remote Access Available

This course has remote access opportunities available. Please speak to your Clinical Specialist for more information.



Please visit www.philips.com/ultrasoundclinicaleducation



© 2019 Koninklijke Philips Electronics N.V.
All rights are reserved.
April 2019

Philips Healthcare reserves the right to make changes in specifications and/or to discontinue any product at any time without notice or obligation and will not be liable for any consequences resulting from the use of this publication.

Philips Healthcare is part of Royal Philips Electronics

www.philips.com/healthcare@philips.com

Philips Healthcare
22100 Bothell Everett Highway
Bothell, Washington 98021