



Measuring Up to Standards: Valvular Quantification with Basic System Training

Philips Ultrasound
Cardiology 220v

This one-day program follows the recommendation for valvular quantification as outlined in various standards and guidelines. Hemodynamic function as well as structural anatomy will be reviewed. This program also includes Interactive presentations with Philips clinical education staff provide a comprehensive review of cardiac system controls and setups.

Course description

Improvements in Doppler and in overall imaging allow visualization never before realized. This program will cover assessment of all four cardiac valves for both stenosis and regurgitation. Examples of correct and incorrect measurements will be given as well as explanation of what comprises a good quality measurement and why another is poor. Educational material will be presented in the form of lectures and case presentations.

Course objectives

Upon completion of this program, attendees should be able to:

- Describe the basics of image optimization
- Discuss structural features and explain common abnormalities of all cardiac valves
- Identify methods for quantification of valvular stenosis.
- Identify methods for quantification of valvular regurgitation.
- Discuss the effects of multiple lesions on valvular assessment.
- Identify the ergonomic, basic and advanced system features
- Describe system controls that enhance image quality and system functionality for cardiac exams

PHILIPS

Valvular Quantification with Basic System Training (CV220v)

Ultrasound is the most commonly used test for the assessment of valvular performance. Non-invasive hemodynamic assessment and the unique ability to see the valves in motion under normal loading conditions is critical in the treatment of valvular disease.

Pre-requisite knowledge

A thorough knowledge and understanding of 2D echocardiography is recommended for this program.

This course is intended for anyone who requires additional ultrasound knowledge.

Location

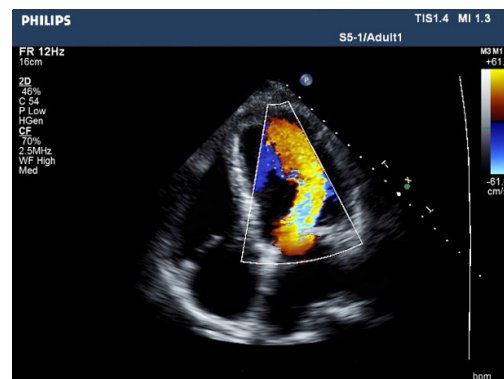
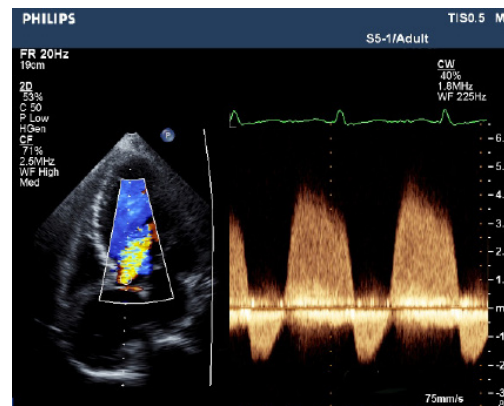
Course will be held at the various Philips training centers in Alpharetta, Georgia; Bothell, Washington; and Cleveland, Ohio.

Faculty

Philips Ultrasound Clinical Education

For More Information

Contact Philips Ultrasound Clinical Education at 800-522-7022 and visit our education catalog at www.learningconnection.philips.com/ultrasound



Please visit www.learningconnection.philips.com/ultrasound



© 2014 Koninklijke Philips Electronics N.V.
All rights are reserved.
JUN 2014

Philips Healthcare reserves the right to make changes in specifications and/or to discontinue any product at any time without notice or obligation and will not be liable for any consequences resulting from the use of this publication.

Philips Healthcare is part of Royal Philips Electronics

www.philips.com/healthcare@philips.com

Philips Healthcare
22100 Bothell Everett Highway
Bothell, Washington 98021